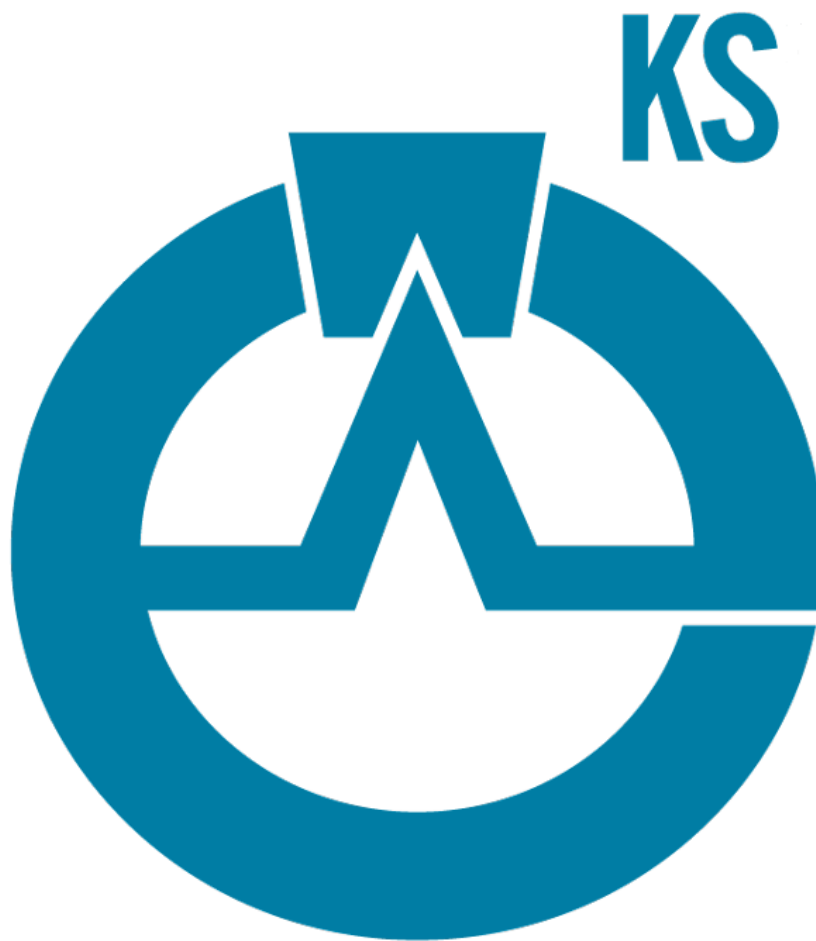


Keystone Software

Installation Guide



This document is provided to customers who have purchased SCIEX equipment to use in the operation of such SCIEX equipment. This document is copyright protected and any reproduction of this document or any part of this document is strictly prohibited, except as SCIEX may authorize in writing.

Software that may be described in this document is furnished under a license agreement. It is against the law to copy, modify, or distribute the software on any medium, except as specifically allowed in the license agreement. Furthermore, the license agreement may prohibit the software from being disassembled, reverse engineered, or decompiled for any purpose. Warranties are as stated therein.

Portions of this document may make reference to other manufacturers and/or their products, which may contain parts whose names are registered as trademarks and/or function as trademarks of their respective owners. Any such use is intended only to designate those manufacturers' products as supplied by SCIEX for incorporation into its equipment and does not imply any right and/or license to use or permit others to use such manufacturers' and/or their product names as trademarks.

SCIEX warranties are limited to those express warranties provided at the time of sale or license of its products and are the sole and exclusive representations, warranties, and obligations of SCIEX. SCIEX makes no other warranty of any kind whatsoever, expressed or implied, including without limitation, warranties of merchantability or fitness for a particular purpose, whether arising from a statute or otherwise in law or from a course of dealing or usage of trade, all of which are expressly disclaimed, and assumes no responsibility or contingent liability, including indirect or consequential damages, for any use by the purchaser or for any adverse circumstances arising therefrom.
(GEN-IDV-09-10816-C)

For Research Use Only. Not for use in Diagnostic Procedures.

Trademarks and/or registered trademarks mentioned herein, including associated logos, are the property of AB Sciex Pte. Ltd., or their respective owners, in the United States and/or certain other countries.

AB SCIEX™ is being used under license.

© 2021 DH Tech. Dev. Pte. Ltd.



AB Sciex Pte. Ltd.
Blk33, #04-06 Marsiling Industrial Estate Road 3
Woodlands Central Industrial Estate, Singapore 739256

Contents

1 Introduction	4
Processing Computer Requirements.....	4
2 Install the Keystone Converter Software	5
Activate the Keystone Converter Software.....	11
Remove the Keystone Converter Software.....	12
Renew the Keystone Converter Software License.....	12
Update Appearance Options on the IDA Explorer Tab.....	12
3 Install the Keystone Viewer Software	14
Activate the Keystone Viewer Software.....	18
Remove the Keystone Viewer Software.....	18
Renew the Keystone Viewer Software License.....	19
4 Configure the Analyst[®] Software	20
Update Appearance Options on the IDA Explorer Tab.....	20
Contact Us	22
Customer Training.....	22
Online Learning Center.....	22
SCIEX Support.....	22
CyberSecurity.....	22
Documentation.....	22

The Keystone Software consists of the following applications:

- The Keystone Converter Software is: A desktop application that converts wiff, rdb, and audit trail files, generated by the Analyst[®] Software, to AnIML format.
- The Keystone Viewer Software is: A desktop application that is used to view the converted AnIML files.

For information on how to renew the software licenses, refer to the *Keystone Converter Software Installation Guide*.

Processing Computer Requirements

Note: We recommend that a dedicated processing computer be used for data conversion. An acquisition computer controls the mass spectrometer, and should be used exclusively for data acquisition. Converting data files while acquisitions are in progress might result in acquisition errors.

- For data processing workstations, SCIEX recommends the following minimum computer configuration:
 - Intel Core I5-4570S Processor
 - 8 GB (2 × 4 GB) DDR3 1600Mhz SDRAM
- The Keystone Software requires an English version of the Windows 7, 64-bit operating system, or the Windows 10 operating system, with cybersecurity support.
- The Analyst[®] 1.7.2 patch for the Keystone Software must be installed.
- The Analyst[®] Software, version 1.7.2, must be installed.

The SCIEX Alpha Workstation 2020 computer is supported for use with the Keystone Software.

Note: This version of the Keystone Software was not tested on Windows 7 operating systems but it is expected to work.

Install the Keystone Converter Software

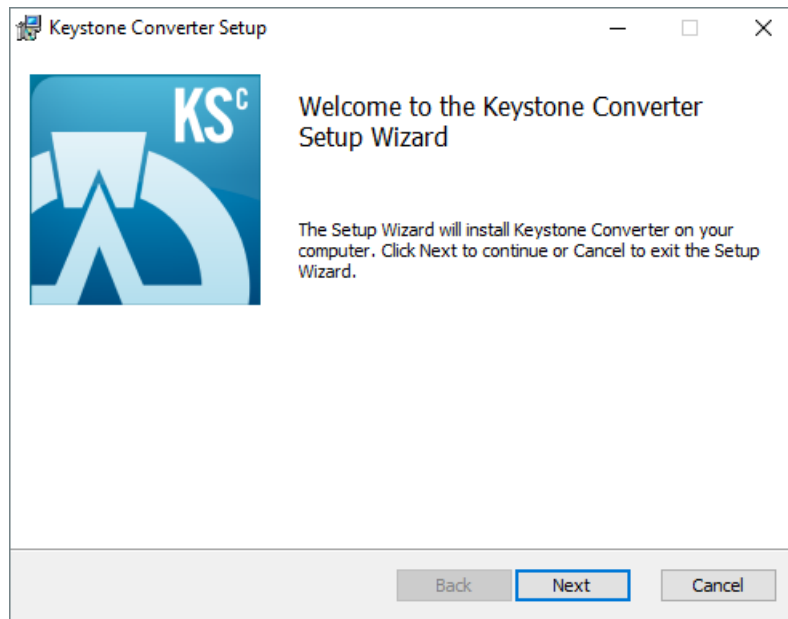
2

1. Log on to the computer as a user with Administrator privileges.
2. Make sure that all applications are closed.
3. Download the **SCIEX_Keystone_Converter.zip** file.

Note: To prevent potential installation issues, save the file to a location other than the computer desktop and disconnect any external USB storage devices.

4. After the extraction is complete, navigate to the extracted files and then click **Keystone_Converter_Installer.msi**.

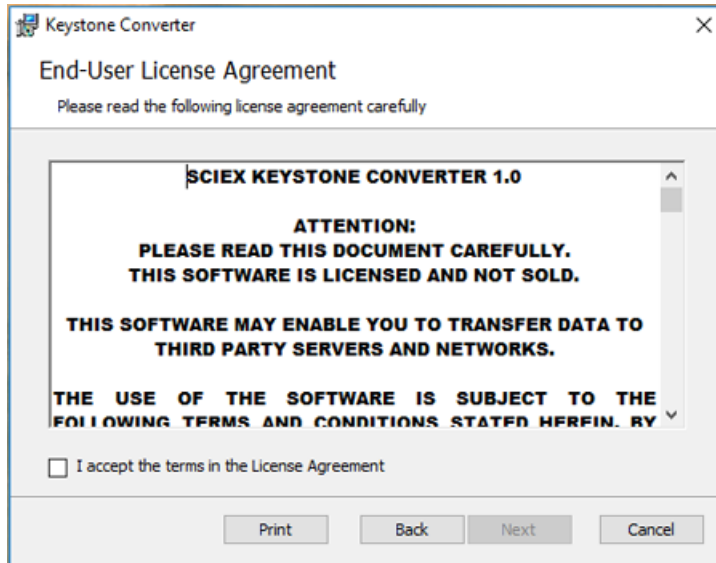
Figure 2-1 Keystone Converter Setup Dialog: Welcome Page



5. Click **Next**.

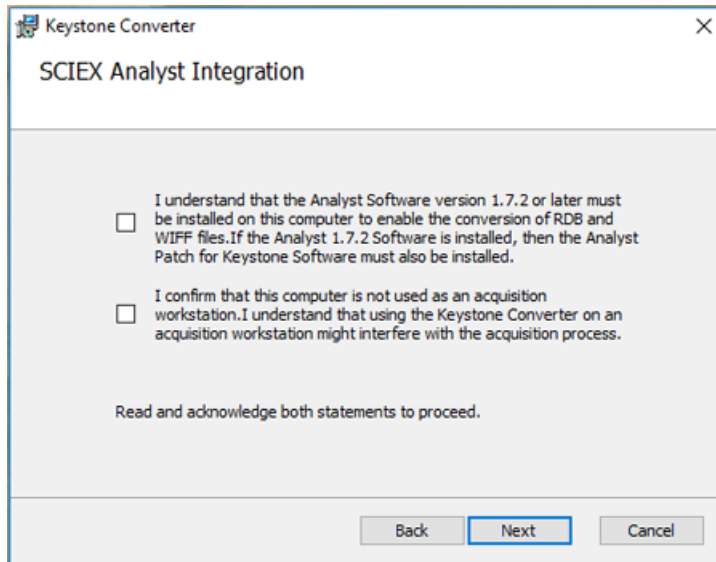
Install the Keystone Converter Software

Figure 2-2 Keystone Converter Dialog: End-User License Agreement



6. Click **Next**.

Figure 2-3 Keystone Converter Dialog: SCIEX Analyst Integration Page

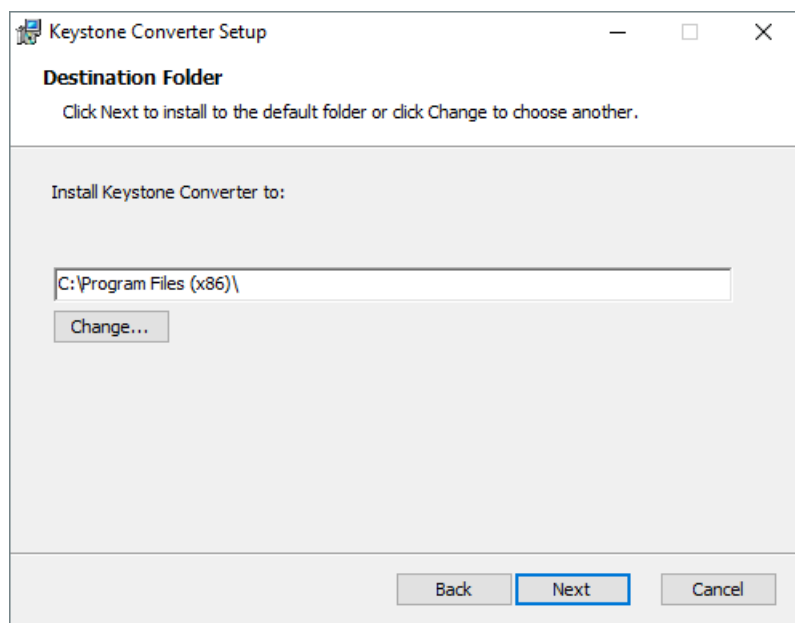


Note: The Analyst[®] 1.7.2 Software must be installed to convert Results Table (rdb) files.

Note: We recommend that a dedicated processing computer be used for data conversion. An acquisition computer controls the mass spectrometer, and should be used exclusively for data acquisition. Converting data files while acquisition is in progress might result in acquisition errors.

7. To continue with the installation, select both check boxes and then click **Next**.

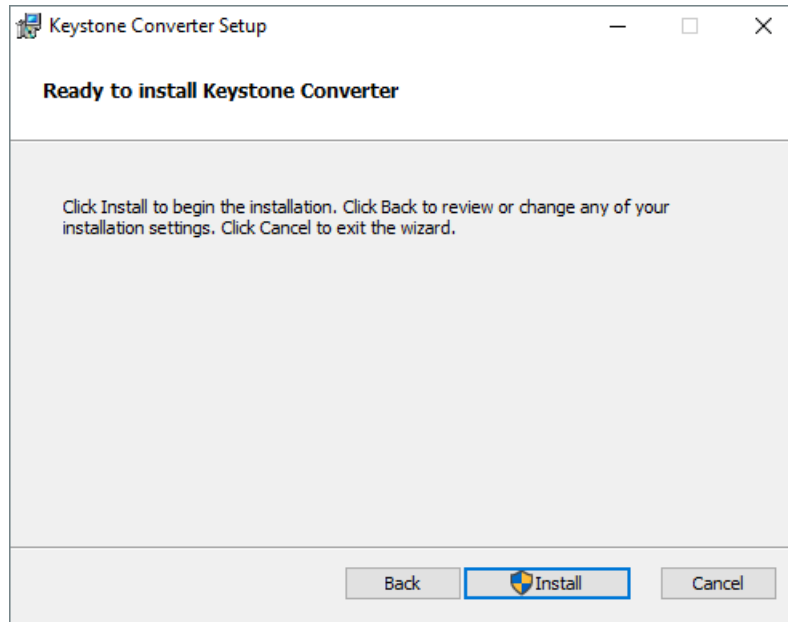
Figure 2-4 Keystone Converter Setup Dialog: Destination Folder Page



8. Click **Next**.

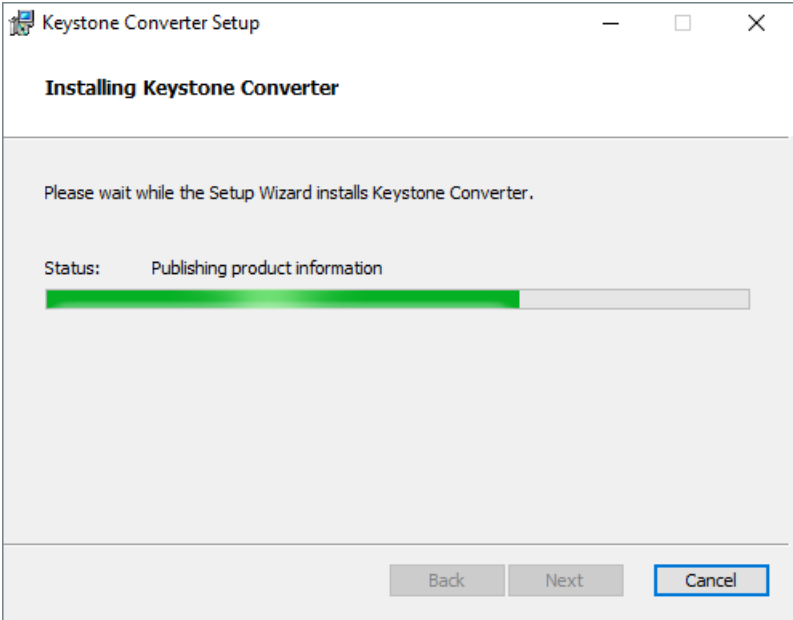
Install the Keystone Converter Software

Figure 2-5 Keystone Converter Setup Dialog: Ready to install Keystone Converter Page



9. Click **Install**.

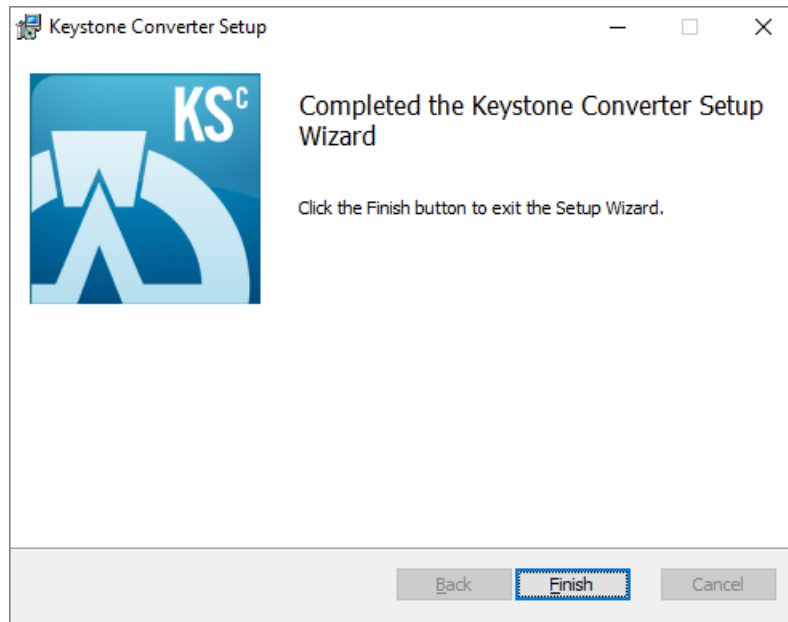
Figure 2-6 Keystone Converter Setup Dialog: Installing Page



Note: When the installation is complete, the following dialog opens.

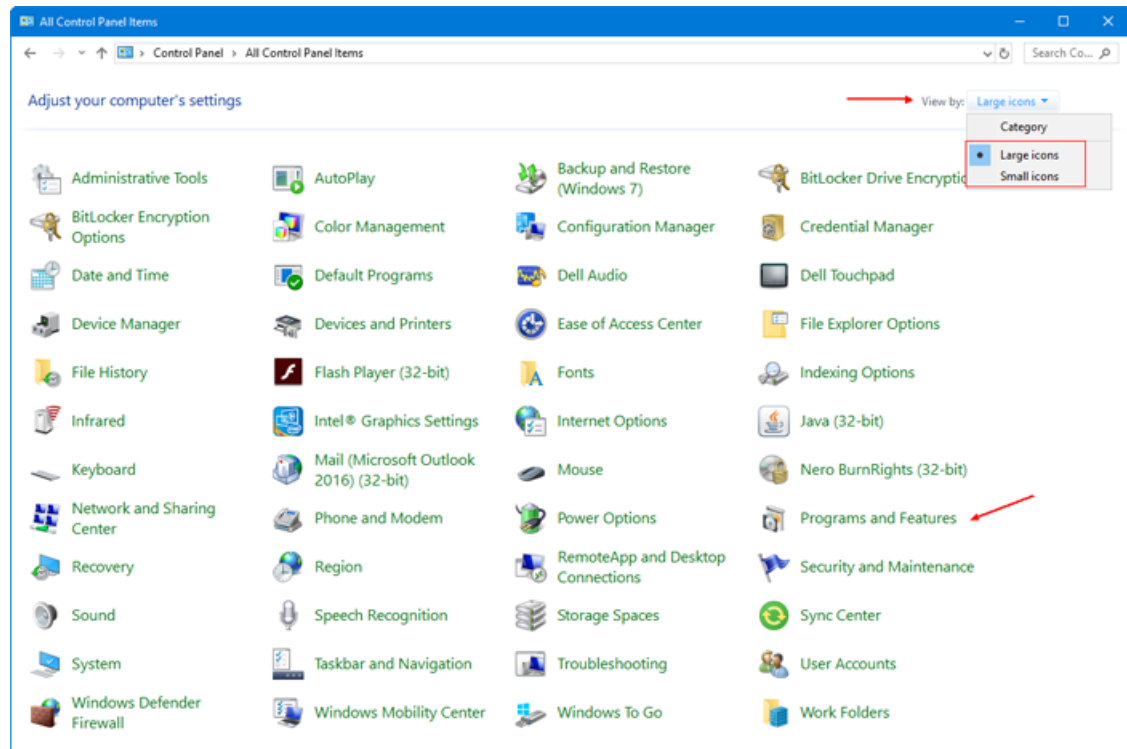
Install the Keystone Converter Software

Figure 2-7 Keystone Converter Setup Dialog: Installation Complete Page



10. Click **Finish**.
11. Click **Start > Control Panel**.
12. Click **Programs and Features**.

Figure 2-8 Control Panel: Select View



Make sure that **Keystone Converter** is shown in the list of programs.

13. Close the Windows Control Panel.

Continue with [Activate the Keystone Converter Software](#).

Activate the Keystone Converter Software

1. Click **Start > SCIEX Keystone > SCIEX Keystone Converter** to open the Keystone Converter Software.
2. Click **Select**.
3. Browse to the desktop, select the **Keystone Converter license.lic** file, and then click **Open**.
The license selection dialog refreshes, showing the license file that was selected.
4. Click **Finish**.
The Keystone Converter Software opens.

Remove the Keystone Converter Software

1. Click **Start > Control Panel**.
 2. Click **Programs and Features**. Refer to [Figure 2-8](#).
 3. Right-click **Keystone Converter** and then click **Uninstall**.
- The software is removed, with no user intervention required.

Note: During the removal, the software name is removed from the Installed Programs list and the user documentation is removed from the Start menu.

Renew the Keystone Converter Software License

1. Obtain a new license file from SCIEX and then save it on the desktop.
2. Browse to C:\ProgramData\KeystoneConverter\license and then delete the keystone_license.lic file.
3. Click **Start > SCIEX Keystone > SCIEX Keystone Converter** to open the Keystone Converter Software.
4. Click **Select**.
5. Browse to the Desktop, select the **keystone converter license.lic** file, and then click **Open**.
The license selection dialog refreshes, showing the license file that was selected.
6. Click **Finish**.
The Keystone Converter Software opens.

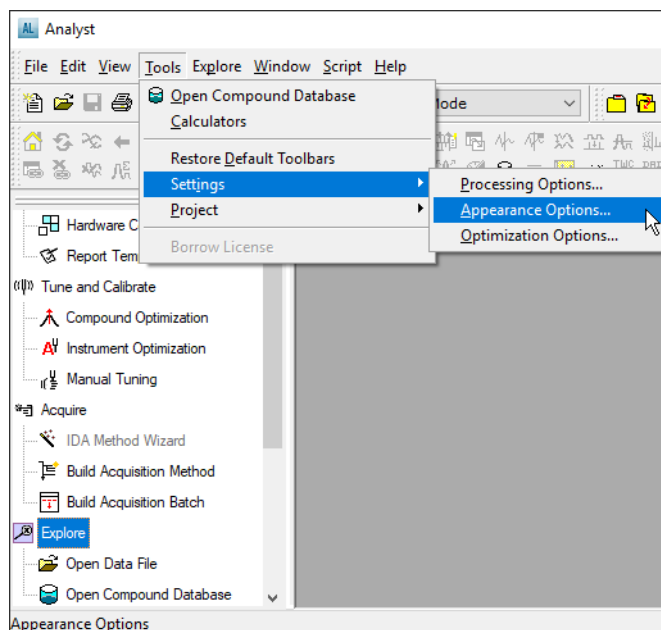
Update Appearance Options on the IDA Explorer Tab

This procedure applies to the Analyst® 1.7.2 Software.

To make sure that data is converted and shown correctly in the Keystone Viewer Software, before converting IDA data, update the IDA Explorer tab in the Appearance Options dialog.

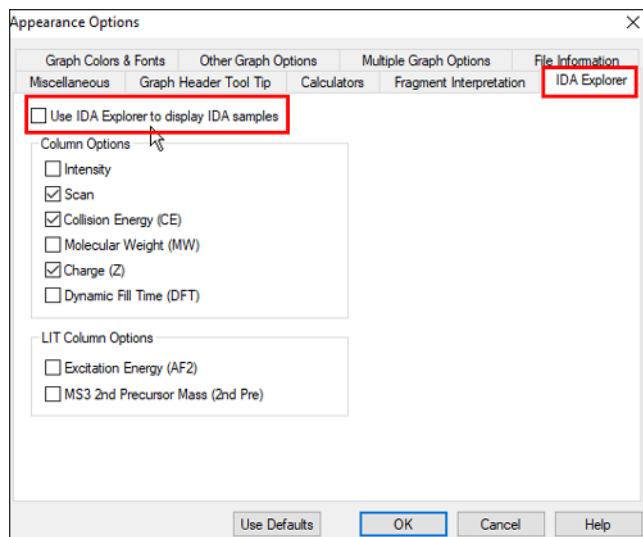
1. Open the Analyst® 1.7.2 Software.
2. On the Navigation bar, click **Explore**.
3. From the menu, select **Tools > Settings > Appearance Options**.

Figure 2-9 Menu Bar



4. Click the **IDA Explorer** tab and then clear the **Use IDA Explorer to display IDA samples** check box.

Figure 2-10 IDA Explorer Tab



Install the Keystone Viewer Software

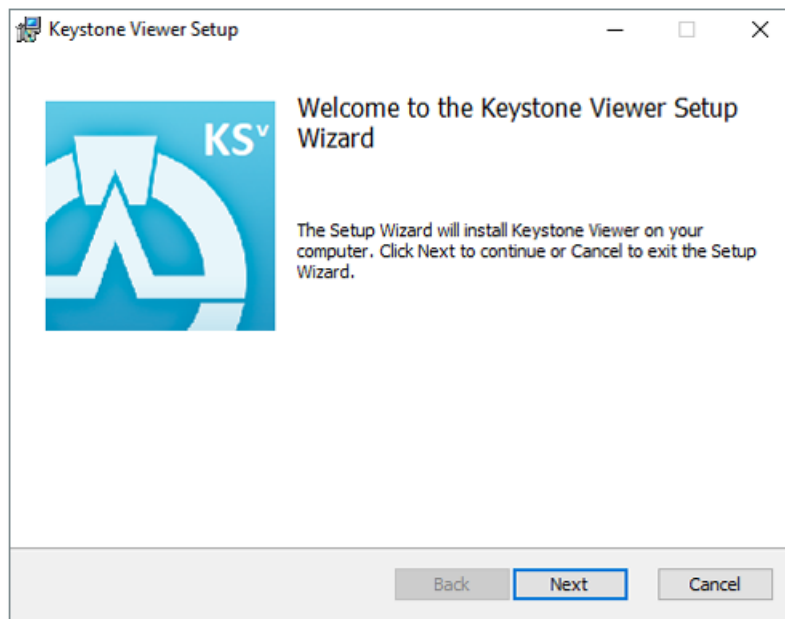
3

1. Log on to the computer as a user with Administrator privileges.
2. Make sure that all applications are closed.
3. Download the **SCIEX_Keystone_Viewer.zip** file.

Note: To prevent potential installation issues, save the file to a location other than the computer desktop and disconnect any external USB storage devices.

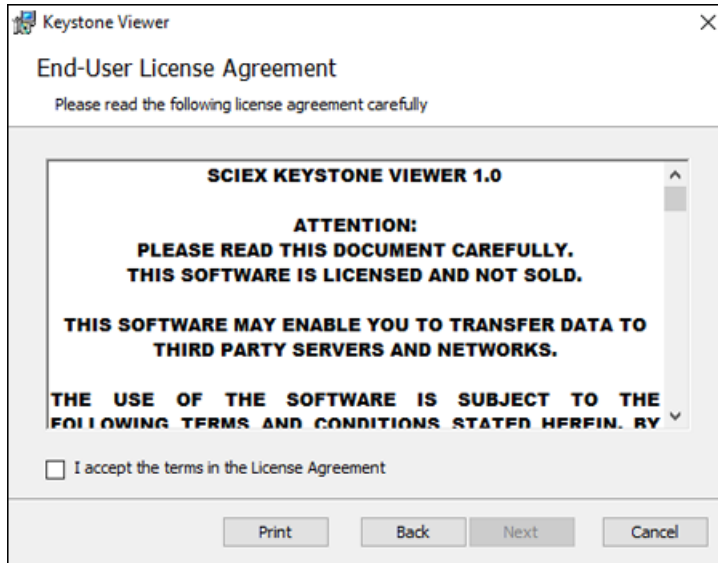
4. After the extraction is complete, navigate to the extracted files and then click **Keystone_Viewer_Installer.msi**.

Figure 3-1 Keystone Viewer Setup Dialog: Welcome Page



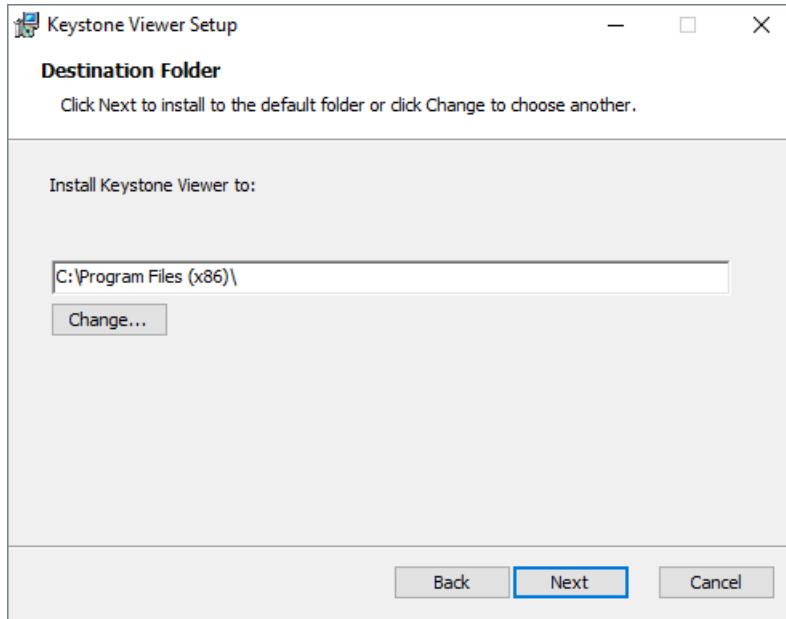
5. Click **Next**.

Figure 3-2 Keystone Viewer Dialog: Welcome Page



- 6. Click **Next**.

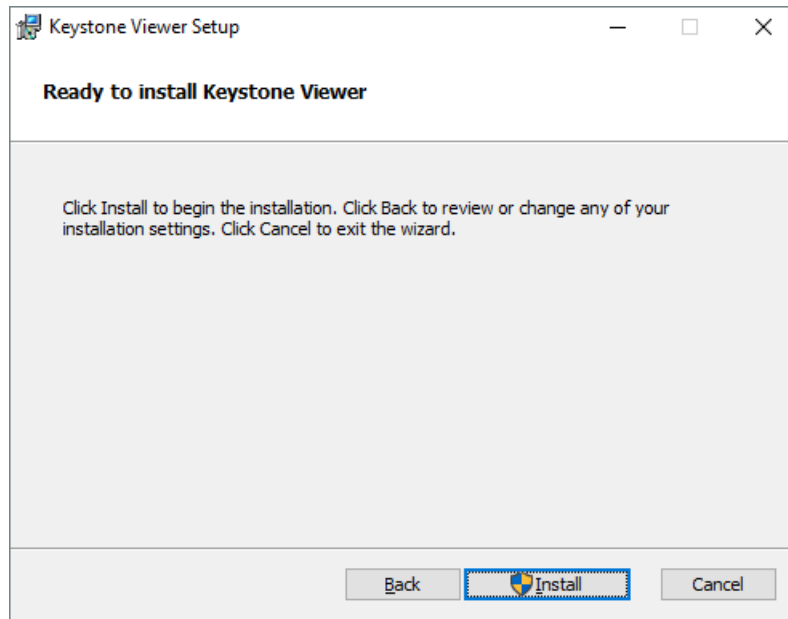
Figure 3-3 Keystone Viewer Setup Dialog: Destination Folder Page



Install the Keystone Viewer Software

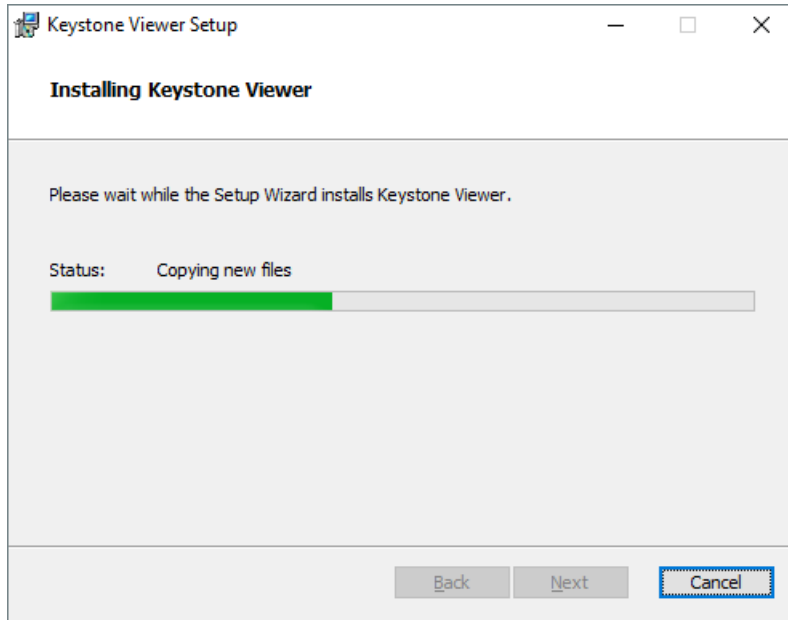
7. Click **Next**.

Figure 3-4 Keystone Viewer Setup Dialog: Ready to Install Page



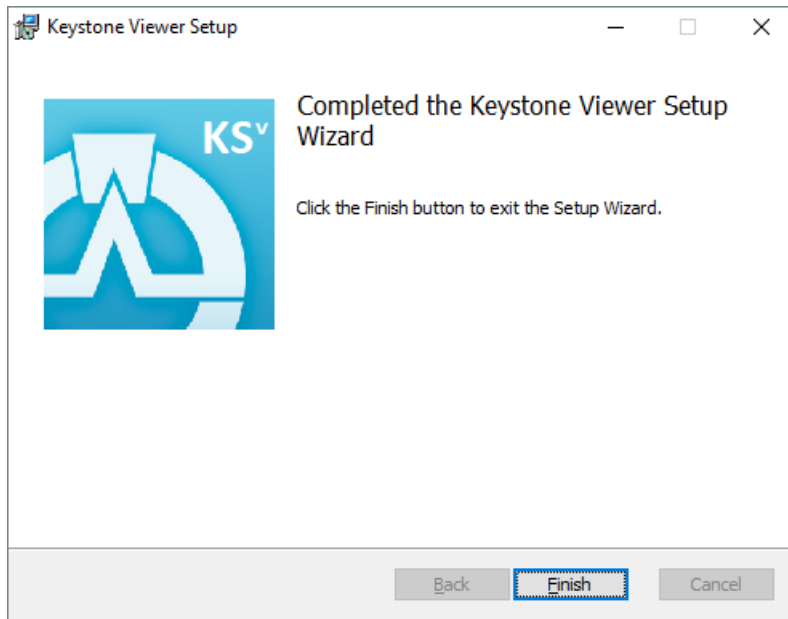
8. Click **Install**.

Figure 3-5 Keystone Viewer Setup Dialog: Installing Page



When the installation is complete, the following dialog opens.

Figure 3-6 Keystone Viewer Setup Dialog: Installation Complete Page



Install the Keystone Viewer Software

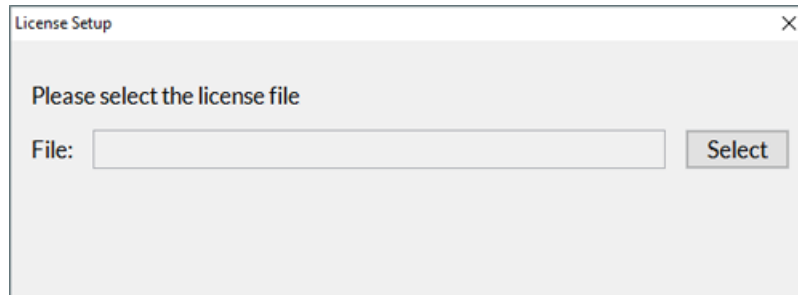
9. Click **Finish**.
10. Click **Start > Control Panel**.
11. Click **Programs and Features**. Refer to [Figure 2-8](#).
Make sure that **Keystone Viewer** is shown in the list of programs.
12. Close the Windows Control Panel.

Continue with [Activate the Keystone Viewer Software](#).

Activate the Keystone Viewer Software

1. Click **Start > SCIEX Keystone > SCIEX Keystone Viewer** to open the Keystone Viewer Software.
The Keystone Viewer Software splash screen is shown and then the License Setup dialog opens.

Figure 3-7 License Setup Dialog



2. Click **Select**.
3. Browse to the desktop, select the **Keystone Viewer License.lic** file, and then click **Open**.
The License Setup dialog refreshes, showing the license file that was selected.
4. Click **Finish**.
The Keystone Viewer Software opens.

Remove the Keystone Viewer Software

1. Click **Start > Control Panel**.
2. Click **Programs and Features**. Refer to [Figure 2-8](#).

3. Right-click **Keystone Viewer** and then click **Uninstall**.
The software is removed, with no user intervention required.

Note: During the removal, the software name is removed from the Installed Programs list and the user documentation is removed from the Start menu.

Renew the Keystone Viewer Software License

1. Obtain a new license file from SCIEX and then save it on the desktop.
2. Browse to C:\ProgramData\KeystoneViewer\license and then delete the **keystone_license.lic** file.
3. Click **Start > SCIEX Keystone > SCIEX Keystone Viewer** to open the Keystone Viewer Software.
4. Click **Select**.
5. Browse to the desktop, select the **keystone viewer license.lic** file, and then click **Open**.
The license selection dialog refreshes, showing the license file that was selected.
6. Click **Finish**.
The Keystone Viewer Software opens.

Configure the Analyst[®] Software

4

1. Make sure that the Analyst[®] Software is open and running in the background before converting any data.
2. Make sure that the data to be converted is in an Analyst Data Root folder and the Analyst[®] Software must have that data root folder set as the active data root folder.

If wiff files are converted using the Keystone Converter Software, then two audit records are created in the Analyst[®] Software Project Audit Trail for every sample converted. If a large number of samples are being converted, then this behaviour might be undesirable.
3. To avoid creating two audit records, in the active Project Audit Map, clear the **Audited** checkbox for the **Closed Module** and the **Data File has been opened** fields.
4. In the Analyst[®] Software, update the IDA Explorer Appearance Options tab. Refer to [Update Appearance Options on the IDA Explorer Tab](#).

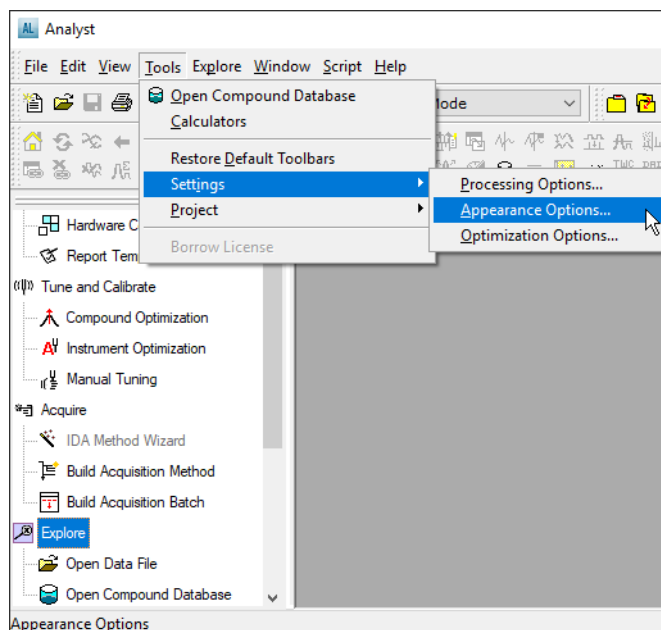
Update Appearance Options on the IDA Explorer Tab

This procedure applies to the Analyst[®] 1.7.2 Software.

To make sure that data is converted and shown correctly in the Keystone Viewer Software, before converting IDA data, update the IDA Explorer tab in the Appearance Options dialog.

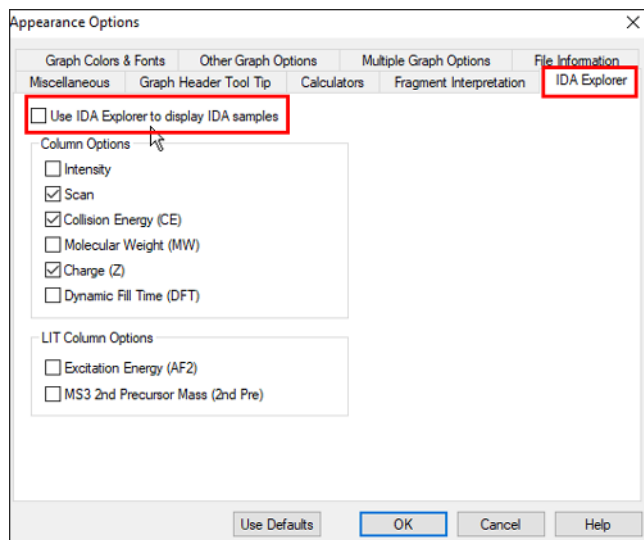
1. Open the Analyst[®] 1.7.2 Software.
2. On the Navigation bar, click **Explore**.
3. From the menu, select **Tools > Settings > Appearance Options**.

Figure 4-1 Menu Bar



4. Click the **IDA Explorer** tab and then clear the **Use IDA Explorer to display IDA samples** check box.

Figure 4-2 IDA Explorer Tab



Contact Us

Customer Training

- In North America: NA.CustomerTraining@sciex.com
- In Europe: Europe.CustomerTraining@sciex.com
- Outside the EU and North America, visit sciex.com/education for contact information.

Online Learning Center

- [SCIEX University™](#)

SCIEX Support

SCIEX and its representatives maintain a staff of fully-trained service and technical specialists located throughout the world. They can answer questions about the system or any technical issues that might arise. For more information, visit the SCIEX website at sciex.com or contact us in one of the following ways:

- sciex.com/contact-us
- sciex.com/request-support

CyberSecurity

For the latest guidance on cybersecurity for SCIEX products, visit sciex.com/productsecurity.

Documentation

This version of the document supercedes all previous versions of this document.

To view this document electronically, Adobe Acrobat Reader is required. To download the latest version, go to <https://get.adobe.com/reader>.

To find software product documentation, refer to the release notes or software installation guide that comes with the software.

The latest versions of the documentation are available on the SCIEX website, at sciex.com/customer-documents.

Note: To request a free, printed version of this document, contact sciex.com/contact-us.
