

Comprehensive Analysis of Recombinant Human Erythropoietin Glycoforms by Capillary Electrophoresis and Nanoflow Liquid Chromatography Coupled with Middle-down Mass Spectrometry

R. Viner¹, A. A. M. Heemsker², D. M. Horn¹, J. Saba¹, M. Bern³, D. Bush⁴, M. Santos⁵, H. Dewald⁵, A.R. Ivanov⁴, B. L. Karger⁴

¹Thermo Fisher Scientific, San Jose, CA; ²Leiden University Medical Center, Leiden, The Netherlands; ³ProteinMetrics, Palo Alto, CA; ⁴Barnett Institute, Northeastern University, Boston, MA; ⁵Sciex LLC, Brea, CA

Overview

Purpose: To develop a middle-down workflow for the characterization of human recombinant erythropoietin (rEPO) glycoforms using a sheathless capillary electrophoresis (CESI) and nanoflow liquid chromatography (nLC) based separation coupled to an Orbitrap mass spectrometer.

Methods: Reduced and alkylated rEPO was digested with LysC. Digested rEPO was analyzed on Orbitrap-based instruments using CESI-MS or nLC/MS coupled with high resolution high mass accuracy (HR/AM) FT scanning of precursor and ETD or HCD MS2 fragment ions.

Results: To perform complete quantitative glycan site-specific mapping of rEPO, we employed limited Lys-C digest to yield one glycosylation site per peptide fragment of 3–10 kDa size ideal for middle-down analysis. This enabled more complete site-specific sequencing of glycoforms compared with top-down analysis. The rEPO glycopeptides were well separated from non-glycosylated peptides by CESI. Glycoform resolution was mostly based on differences in the number of sialic acid residues. nLC-separation provided complementary information and better separation of large doubly glycosylated N-linked peptides.

Introduction

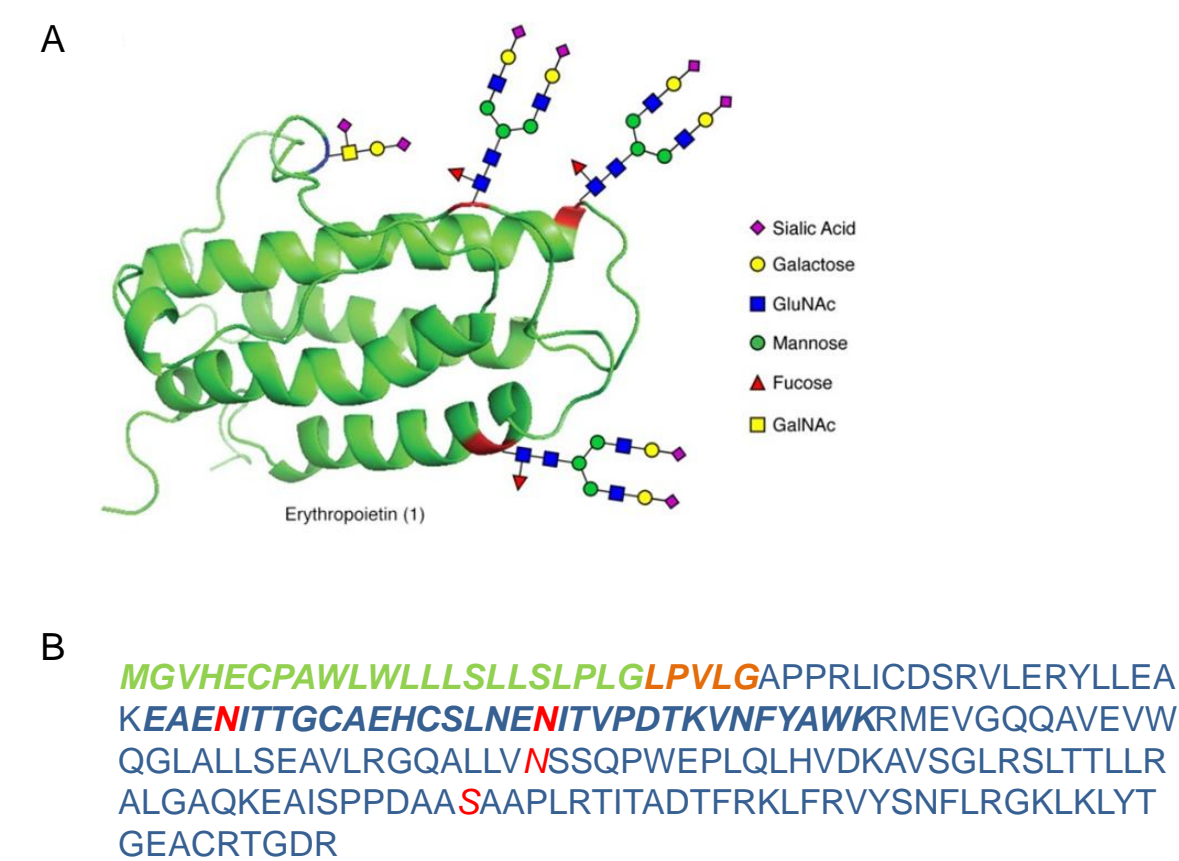
Erythropoietin is a glycoprotein that is synthesized mainly in the kidney and that stimulates erythropoiesis. Recombinant human Erythropoietin (rEPO) is used for treatment of anemia resulting from chronic kidney disease. EPO has three N-glycosylation sites and one O-glycosylation site, which makes glycoform profiling challenging due to the high heterogeneity (Figure 1). Multiple formulations of rEPO have been studied extensively using different approaches, including capillary electrophoresis and nanoflow liquid chromatography coupled to advanced mass spectrometry (MS) detection^{1–2}. Although CE-MS has been used to characterize intact EPO glycoforms, quantitative mapping of each glycosylation site by CE-MS has not been previously accomplished. Here, we report that sheathless CE- and nLC-based separations coupled to Orbitrap MS provide complementary information and allow for comprehensive site-specific glycan mapping of rEPO.

Methods

Sample Preparation

Reduced and alkylated rEPO expressed in CHO or HEK cells (Erythropoietin-Alpha, ProSpec, NJ) was digested with LysC (enzyme:protein ratio of 1:200, for 2 hr at 37° C in 20 mM ammonium acetate, pH 6.0), trypsin (enzyme:protein ratio of 1:100, for 4 hr at 37° C in 20 mM ammonium bicarbonate, pH 8.0), or proteinase K (enzyme:protein ratio of 1:50, for 1 hr at 37° C in 20 mM ammonium acetate, pH 6.0). All enzymes were from Roche, IN.

FIGURE 1. Erythropoietin-Alpha structure (A) and sequence (B): green – signal peptide; brown – N-terminus variant, light blue – EPO, dark blue – sequence variant, red – glycosylation sites.



Liquid Chromatography

The rEPO tryptic or LysC digests were separated using the Thermo Scientific™ EASY-nLC™ 1000 HPLC system with a Magic C18 spray tip 20 cm x 75 μm I.D. column (Michrom). Gradient elution was performed from 4–30% over 60 min and from 30–85% over 10 min with ACN in 0.1% formic acid at flow rate of 300nL/min.

Capillary Electrophoresis

CESI-MS was performed using a CESI 8000 High Performance Separation System (AB Sciex) equipped with an OptiMS silica cartridge consisting of a porous sprayer operating in an ultra-low flow regime (Figures 2A and 2B). The rEPO digests were separated using a prototype neutral coated capillary (100 cm total length) or bare fused silica capillaries (90 cm total length) both with an inner diameter of 30 μm. The acidic background electrolyte (BGE) of acetic acid was prepared by diluting glacial acetic acid to appropriate concentration.

Mass Spectrometry

Samples were analyzed on Thermo Scientific™ Orbitrap Elite™ mass spectrometer and Thermo Scientific™ Orbitrap Fusion™ Tribrid™ mass spectrometer using FT/IT HCD, CID, or ETD MS2 fragmentations in DDDT or HCDp/dETD/CID methods. FT MS1 was acquired at resolution settings of 60–120K at m/z 200 and FTMS2 at resolution of 30–60K at m/z 200.

Data Analysis

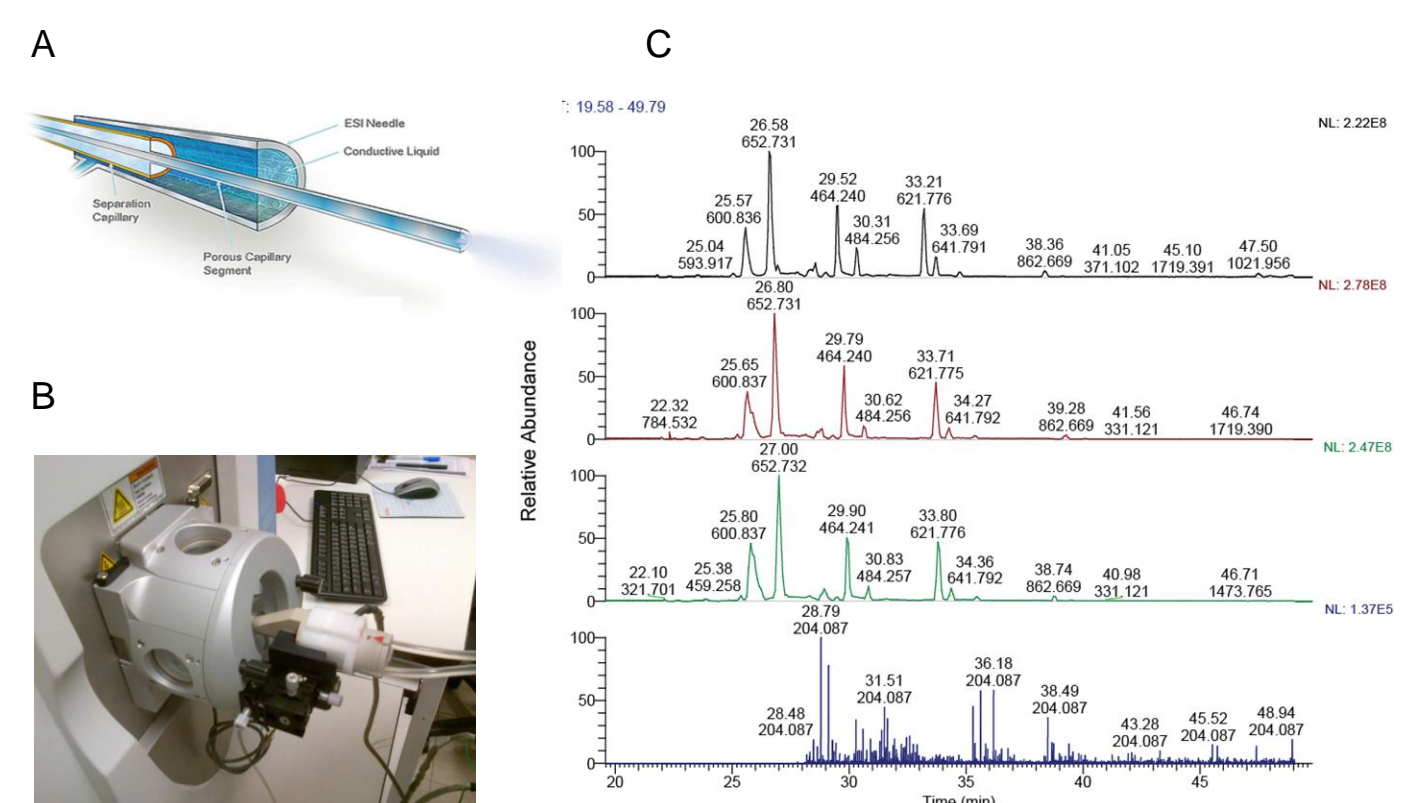
The Thermo Scientific™ ProSightPC 3.0, Protein Deconvolution 3.0, Pinpoint™ 1.4, and Proteome Discoverer™ 2.0 software with the Byonic™ search node (Protein Metrics) were used for glycopeptide data analysis and glycoform quantification. SimGlycan® 4.5 software (PREMIER Biosoft) was used for proteinase K digest glycopeptide and glycan composition identification.

Results

Reproducibility of CESI-MS

Capillary electrophoresis (CE) is well suited to the separation of glycopeptides due to differences in charge states and Stokes radii³. Recent advances in electrospray ion source technology have enabled sheathless coupling of CE to MS, eliminating the dilution effects of prior sheath flow techniques (Figures 2A and 2B), increasing sensitivity and reproducibility of glycoprotein analysis. We were able to identify and quantify multiple EPO glycopeptides using 200 ng of sample with excellent S/N. Migration times and peak areas demonstrated good reproducibility with less than 10% RSD across runs (Figure 2C). Glycopeptides were well separated by CESI and resolved within 20 min of a 50 min long run (Figure 2C).

FIGURE 2. CESI-MS of rEPO. Schematic of a CESI sprayer (A); A Thermo Scientific™ nanospray source with an OptiMS sprayer adaptor (B); Base peak electropherograms for three constitutive runs of rEPO LysC digest (200 ng) and MS2 XIC for HexNAc oxonium peak (C).



Characterization of O-glycoforms

EPO alpha contains one O-glycosylation site at Ser¹²⁶. Limited Lys-C digest yielded peptides of different lengths containing Ser¹²⁶ in a range of 3–9 kDa (Figure 3). All O-linked glycopeptides can only be identified in the FT ETD experiments because the O-linked glycans are very labile and do not survive collisional activation (Figure 3). As expected, CESI glycoform separation was mostly based on differences in the number of sialic acid residues (Figure 4). The two predominant O-glycosylated peptides (N-acetylhexosamine-hexose with one or two sialic acids) migrated as completely resolved peaks in CESI but not in nLC (Figure 4A vs. 4B) using similar analysis times. The relative abundances of major CHO rEPO O-glycoforms are shown in Table 1. We detected several unmodified Ser¹²⁶ peptides (total relative abundance 9%, Table 1), which means that the site was only partially glycosylated in this sample. Additionally, we observed partial O-glycosylation on Ser⁹ and Ser¹²⁰ residues.

FIGURE 3. Identification of rEPO LysC O-linked glycopeptides by Byonic node in Proteome Discoverer 2.0 software (114–150, A) or by ProSightPC 3.0 software using biomarker + delta m search (95–150, B).

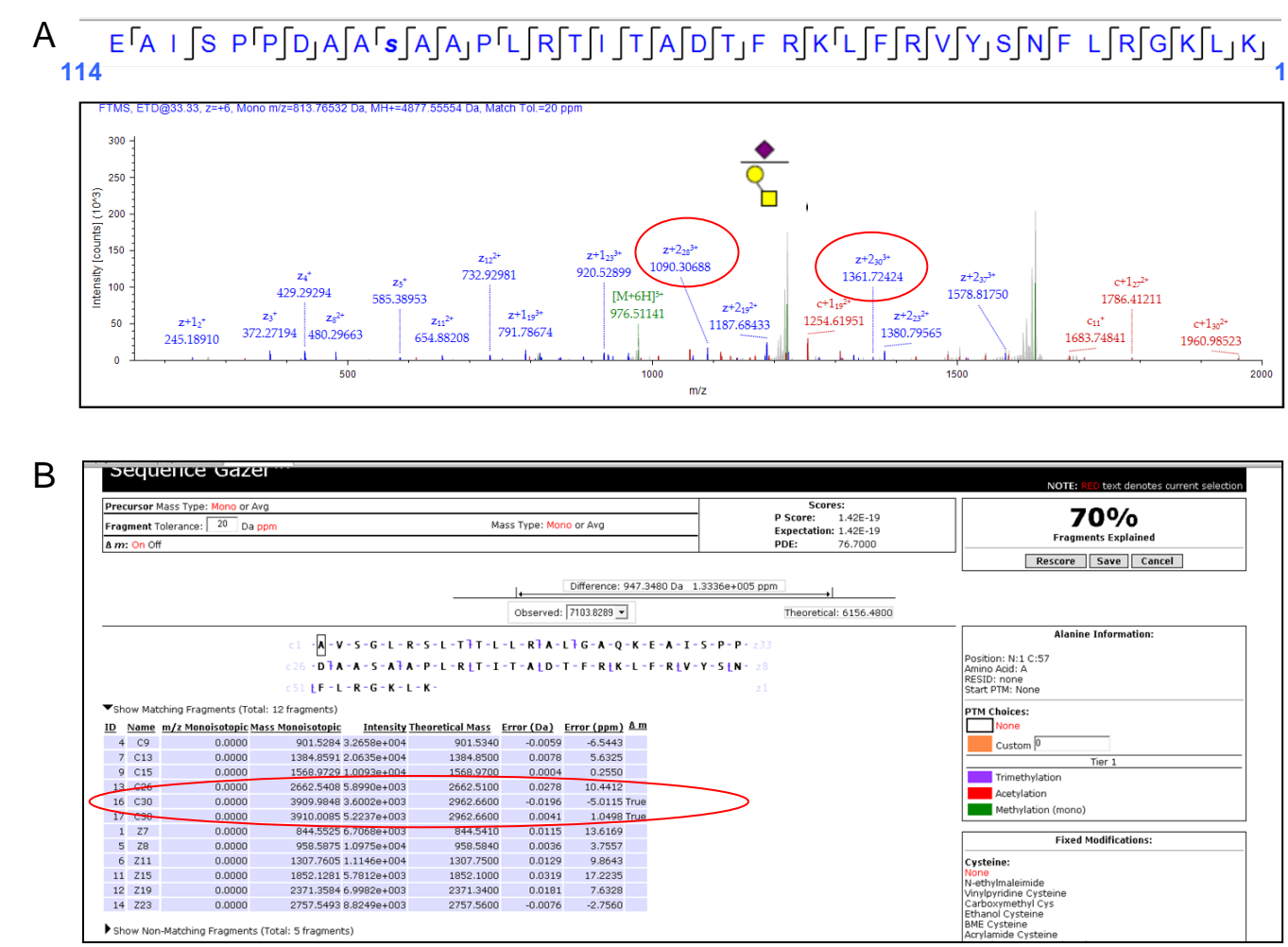


FIGURE 4. CESI-MS (A) and nLC-MS (B) separation of O-linked E₁₁₄-K₁₅₀ glycopeptide.

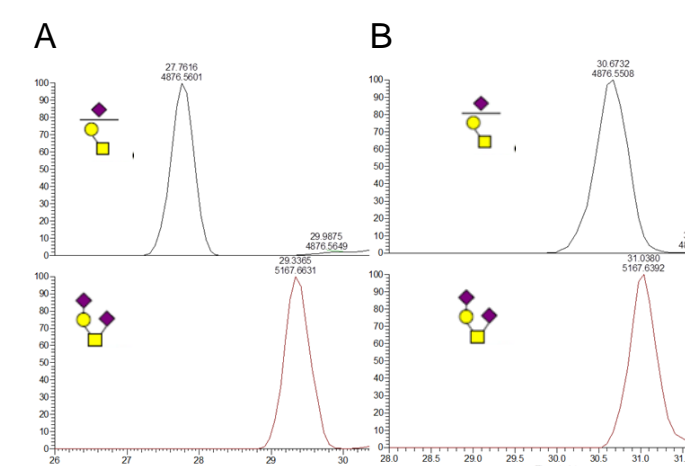


TABLE 1. Peptide Quantification of major rEPO glycoforms for Ser¹²⁶ site. Each glycoform was calculated as a sum of all detected peptides.

Glycoform	Relative Abundance (%)
HexNAc ₂ Hex ₁ dHex ₂ NeuAc ₆	42.5
HexNAc ₃ Hex ₁ dHex ₂ NeuAc ₆	37
HexNAc ₂ Hex ₁ dHex ₂ NeuAc ₇	6.5
HexNAc ₃ Hex ₁ dHex ₂ NeuAc ₇	4
HexNAc ₂ Hex ₁ dHex ₂ NeuAc ₈	9

Characterization of rEPO N-linked Glycopeptides

EPO alpha has three N-glycosylation sites: Asn²⁴, Asn³⁸, and Asn⁸³. We detected several LysC peptides containing Asn²⁴ and Asn³⁸ sites in nLC-MS runs but not in CESI-MS experiments, probably due to the nature of the capillaries used, large glycopeptide size (>8 kDa), and relative ratio of glycan to peptide. The major peptide was A₁-K₄₅ with sum glycan composition for both sites of HexNAc₂Hex₁dHex₂NeuAc₆ (Figure 5 and Table 2). ETD spectra of this peptide were of insufficient quality for unambiguous assignment of glycan composition for each site. For this reason, Table 2 presents the glycan composition as a sum of different glycan composition for two sites on this peptide.

For the site Asn⁸³, we did not observe as many N-C-ragged glycopeptides as for other sites, which simplified quantification of its glycoforms. The main glycopeptide was R₃₃-K₉₇ (Figure 6). Due to the size of this peptide and the glycan-to-peptide ratio, the difference of one sialic acid causes a smaller migration time shift (~0.4 min) than for O-linked glycoforms (Figure 7 vs. Figure 4) and the difference in neutral HexHexNAc residues contributes to migration shifts to even a lesser extent (Figure 7). As expected⁴, the main glycan compositions for Asn⁸³ site were tetra-acidic oligosaccharides (Figure 8).

FIGURE 5. Identification of rEPO LysC double N-linked glycopeptide (A₁-K₄₅) by Byonic node in Proteome Discoverer 2.0 software.

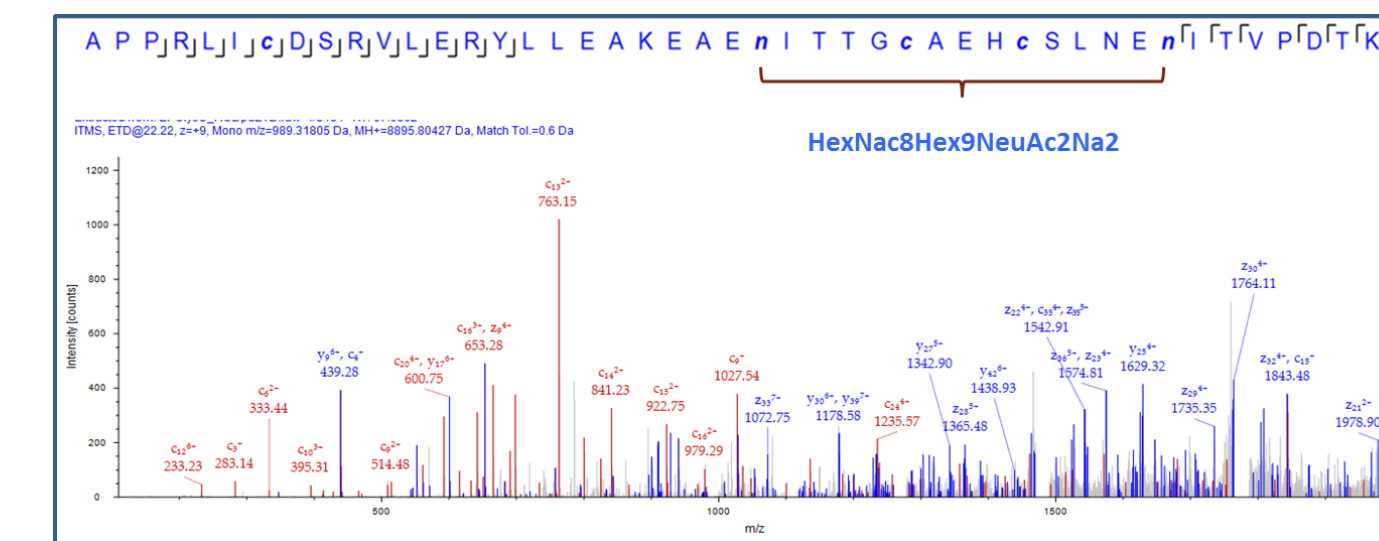


FIGURE 6. Identification of rEPO LysC N-linked glycopeptide (R₃₃-K₉₇) by Byonic node in Proteome Discoverer 2.0 software using HCD (A) or ETD (B) fragmentation.

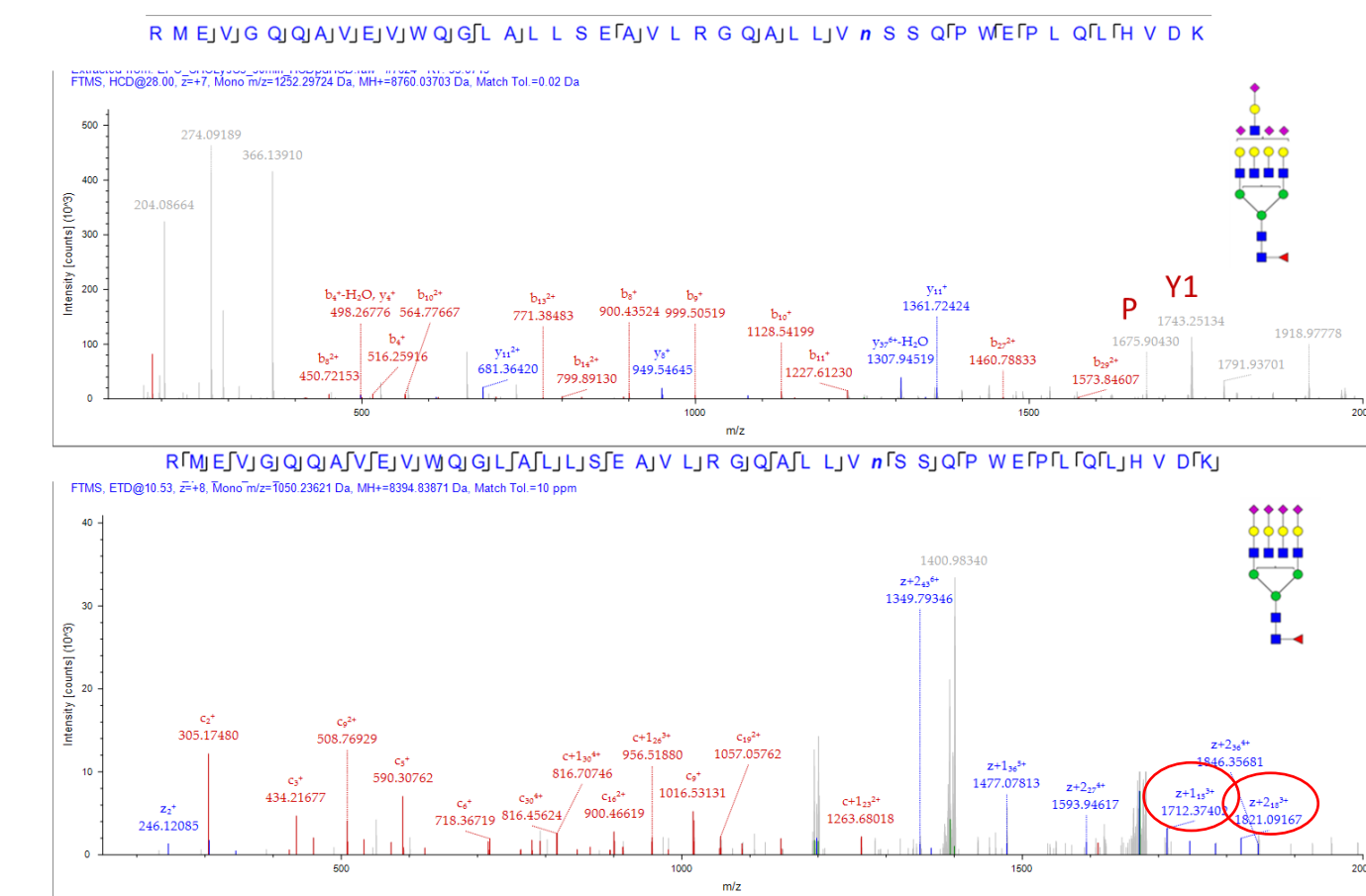


FIGURE 7. CESI-MS separation of Asn⁸³ glycoforms (R₃₃-K₉₇).

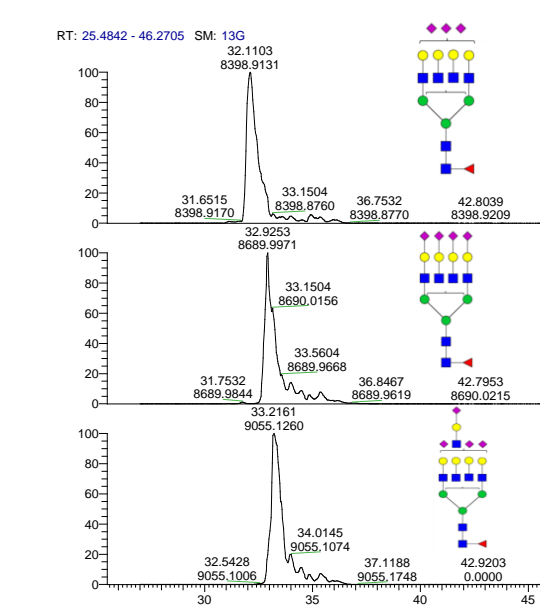
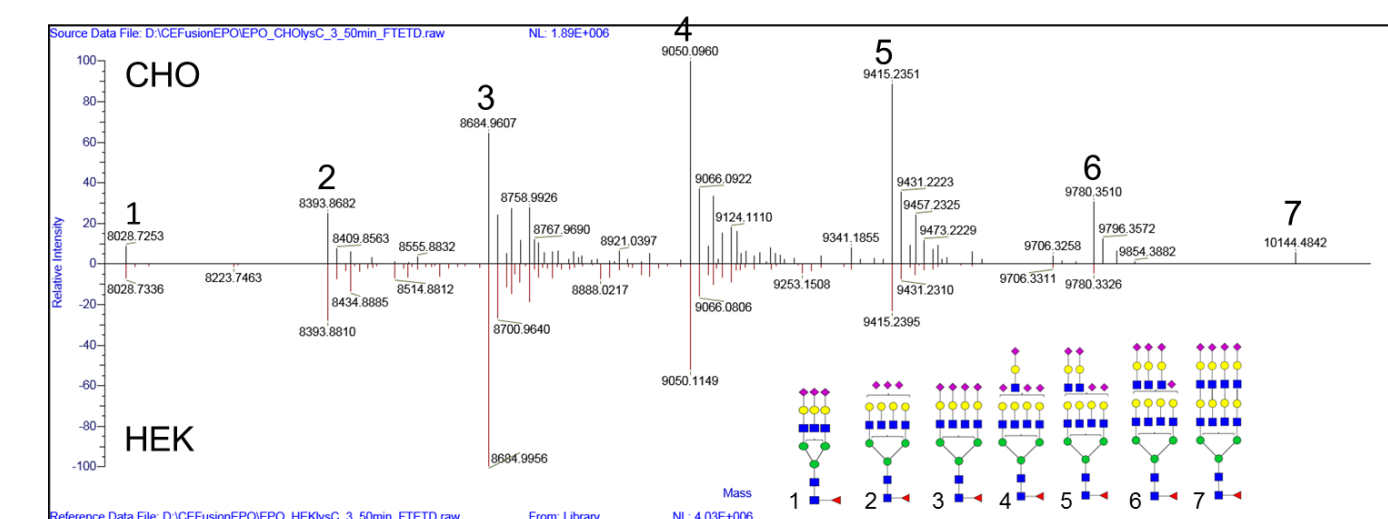


TABLE 2. Peptide quantification of major rEPO glycoforms for Asn^{23/38} sites. Each glycoform was calculated as a sum of all detected peptides, including acetylated and sodiated species.

Glycoform	Relative Abundance (%)
HexNAc ₂ Hex ₁ dHex ₂ NeuAc ₆	35
HexNAc ₃ Hex ₁ dHex ₂ NeuAc ₆	18
HexNAc ₄ Hex ₁ dHex ₂ NeuAc ₆	17
HexNAc ₂ Hex ₁ dHex ₂ NeuAc ₇	17
HexNAc ₃ Hex ₁ dHex ₂ NeuAc ₇	12

FIGURE 8. Comparison of CHO and HEK rEPO Asn⁸³ N-glycoforms using the Xtract deconvolution algorithm in Protein Deconvolution 3.0 software.



Additionally, comparative glycopeptide profiling of this site for rEPO expressed in CHO vs HEK cells was performed (Figure 8). It has been reported that oligosaccharide structural features of recombinant proteins are cell line-, culture condition-, and specie-specific.⁵ Assuming equal detection response for all glycoforms, CESI-MS analysis demonstrated significant differences in relative abundance of glycoforms expressed in CHO vs. HEK cells. The main glycoform for this site was HexNAc₆Hex₂dHex₂NeuAc₄ in HEK cells, and for CHO cells several larger tetra-sialylated species offset by HexNAcHex units were dominant.

The rEPO samples used in the current study were not of pharmaceutical grade and, as a result, we observed not only high heterogeneity of glycoforms and oxidation products, but also different additional proteoforms including altered primary structures of N-termini and some other sequence variants for residues S₃₃-K₉₅ (Figure 1B). Using HR/AM ETD and HCD fragmentation in combination with data analysis tools, we were able to identify these sequence variants and additional partial glycosylation sites, but it significantly complicated our study.

Conclusion

- CESI-MS technique is reproducible (RSD <10%) and sensitive, obtaining the same sequence coverage and number of glycopeptides with five times lower amount of sample than for nLC-MS experiments.
- CESI separation of glycoforms is clearly based on differences in the number of sialic acid residues (that is, difference in charge) and the peptide to glycan mass ratios.
- In the present study, we used neutral or bare fused silica capillaries which demonstrated high adsorption for glycopeptides with high glycan to peptide ratios. New MS compatible coatings with moderate to low reversed electroosmotic flow would be highly desirable.
- The primary O-linked glycoforms of ProSpec's CHO rEPO are HexNAcHex+1(2) NeuAc with the relative abundance of unglycosylated Ser¹²⁶ of approximately 9%.
- The primary N-linked glycoforms of ProSpec's CHO rEPO for all three sites are tetra-sialylated species with average glycan composition of HexNAc₆Hex₂dHex₂NeuAc₄.
- Comparative glycoprofiling of Asn⁸³ site for rEPO expressed in CHO vs. HEK using CESI-HRAM middle-down demonstrates clear differences in glycoform abundances and validates the utility of this approach for in-depth characterization of glycoproteins.

References

- Haselberg, R.; de Jong, G. J.; Somsen, G. W. *Anal. Chem.* **2013**, *85* (4), 2289–2296.
- Balaguer, E.; Demelbauer, U.; Pelzing, M.; Sanz-Nebot, V.; Barbosa, J.; Neusüss, C.; *Electrophoresis* **2006**, *13*, 2638–2650.
- Moini, M. *Anal. Chem.* **2007**, *79*, 4241–4246.
- Kolarich, D.; Jensen, P. H.; Altmann, F.; Packer, N. H. *Nat. Protoc.* **2012**, *7* (7), 1285–1298.
- Higgins, E. *Glycoconjugate J.* **2010**, *27*, 211–225.

Byonic is a trademark of Protein Metrics. SimGlycan is a registered trademark of PREMIER Biosoft International. All other trademarks are the property of Thermo Fisher Scientific and its subsidiaries.

This information is not intended to encourage use of these products in any manners that might infringe the intellectual property rights of others.